



T-DESIGN  
SWEATERS  
LIMITED

**We Provide clients with fashionable and high  
quality knitwear without compromising  
on sustainability and worker's rights.**

[www.tdesignsweater.com](http://www.tdesignsweater.com)



## Company Overview

TDSL started its journey in 2009 with a single goal, “excellence”. As a result, over the past 10 years, we have evolved the manufacturing process to provide clients with only the best products. We are always attentive to the client’s needs and desires which enables us to bring their ideas to reality. Today we work with industry leaders, such as NEW YORKER, NKD, Auchan, Tally Weijl, OVS and many more.

Our highly skilled management team has developed an organizational structure that encompasses all the stages of manufacturing value chain from design to delivery. In addition our constant focus on cost management, raw material sourcing and quality control enable us to deliver high value products at competitive prices. We are committed to our customers; which means that more than 2000-strong workforce is focused on staying true to its word.

## Mission & Vision

### The Vision

To be a world class knitwear manufacturer recognized globally for its excellence in quality and service.

### Our Mission

- Build a culture of honesty, integrity and accountability.
- Foster collaboration and innovation.
- Reduce impact on the environment through sustainability
- Care for our clients, communities and employees.



## Factory

### Capacity Per Month

3GG-5GG	200,000 pcs
7GG-12GG	300,000 pcs
<b>Total</b>	<b>500,000 pcs</b>

### Lead Time

	Local Yarn	Imported Yarn
<b>Sample</b>	<b>7-10 Days</b>	<b>15-25 Days</b>
<b>Bulk Production</b>	<b>80-100 Days</b>	<b>100-120 Days</b>



T-DESIGN  
SWEATERS  
LIMITED

## Strength



## Design

Our European Designer is constantly sourcing and developing new ideas/samples based on the latest trends in the fashion industry.

## Sourcing

We do extensive research on sourcing new yarns and new knitting stitches from local and international yarn suppliers and fairs, like PITTI FILATI and SPINEXPO.



## Quality

We maintain strict quality control over the entire production process, from sourcing to packaging. Our merchandisers and quality control managers are extensively trained and have thorough knowledge about the products and the production process. In each stage of production the product is thoroughly inspected to ensure we meet the client's requirements and provide them with the best quality product always.

## Clients

**NEWYORKER**

**NKD**

**Auchan**

**TALLY WEIJL**

**LPP**

**ASOS**

**Zizzi**

**OVS**

**DeFacto**

**Lager 157**

*Ulla Popken*



T-DESIGN  
SWEATERS  
LIMITED



## Compliance

We are compliant with all rules and regulations under the Bangladesh Labor Code 2006 as well as ILO's Code of Conduct. Our factory maintains active status with excellent ranking with several auditing bodies including ACCORD, BSCI, SEDEX, ICS etc. As a result we are an approved vendor for many significant retailers all over the world.



## Health & Safety

The proper importance of health & safety is ensured right from the top management of TDSL. Everyone in the company is given proper guideline of its safety precautions in order to minimize the number of accidents. All the basics of safety policies from different international organizations are mandatory for each and every person working in the company. Holding hand rails, good and tidy housekeeping, not going for the shortcuts etc. have been declared as compulsory for every person working with the company. Furthermore, creating awareness among the employees has also been an area of prime focus to raise the safety standards. Management of the company communicates frequently with the employees to make them understand the value of safety. The complaint mechanism ensures that safety and health concerns are properly addressed and remediated, The right to refuse unsafe work is upheld where necessary.

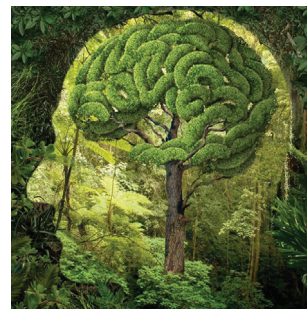


## CSR

We contribute a large portion of our profits towards the development of our society. We believe if we can work together to make a better society today, tomorrow we will leave behind the best society for our future generations. The company understands that a strong CSR program is an essential element in achieving good business practices and efficient leadership. That's why the company has made a clear vision for CSR activities.

Here are some of our areas of our extended corporate social responsibility programs:

- Warm Clothing Give Away in Winter Season
- Merit Scholarship for Deserved Student
- Tree Planation
- Underprivileged Students Support
- Free Vaccination
- Health Camp for Women



## Sustainable Fashion

We believe sustainable fashion or eco fashion as some people call it, is not a trend but a common sense approach to protecting our environment, not only for us but for everything that comes after.

Our knitwear is made from fabric sourced sustainably, manufactured ethically and will last longer due to great quality.

We consider the entire life span of the garment from design to potential uses and their consequent impact on our planet and its inhabitant's who are not related to either the production or consumption of the product.



T-DESIGN  
SWEATERS  
LIMITED



**OUR**  
PRODUCTS



T-DESIGN  
SWEATERS  
LIMITED



## Bank Details

SOUTH EAST BANK LIMITED  
Dhanmondi Main Branch  
Dhanmondi, Dhaka

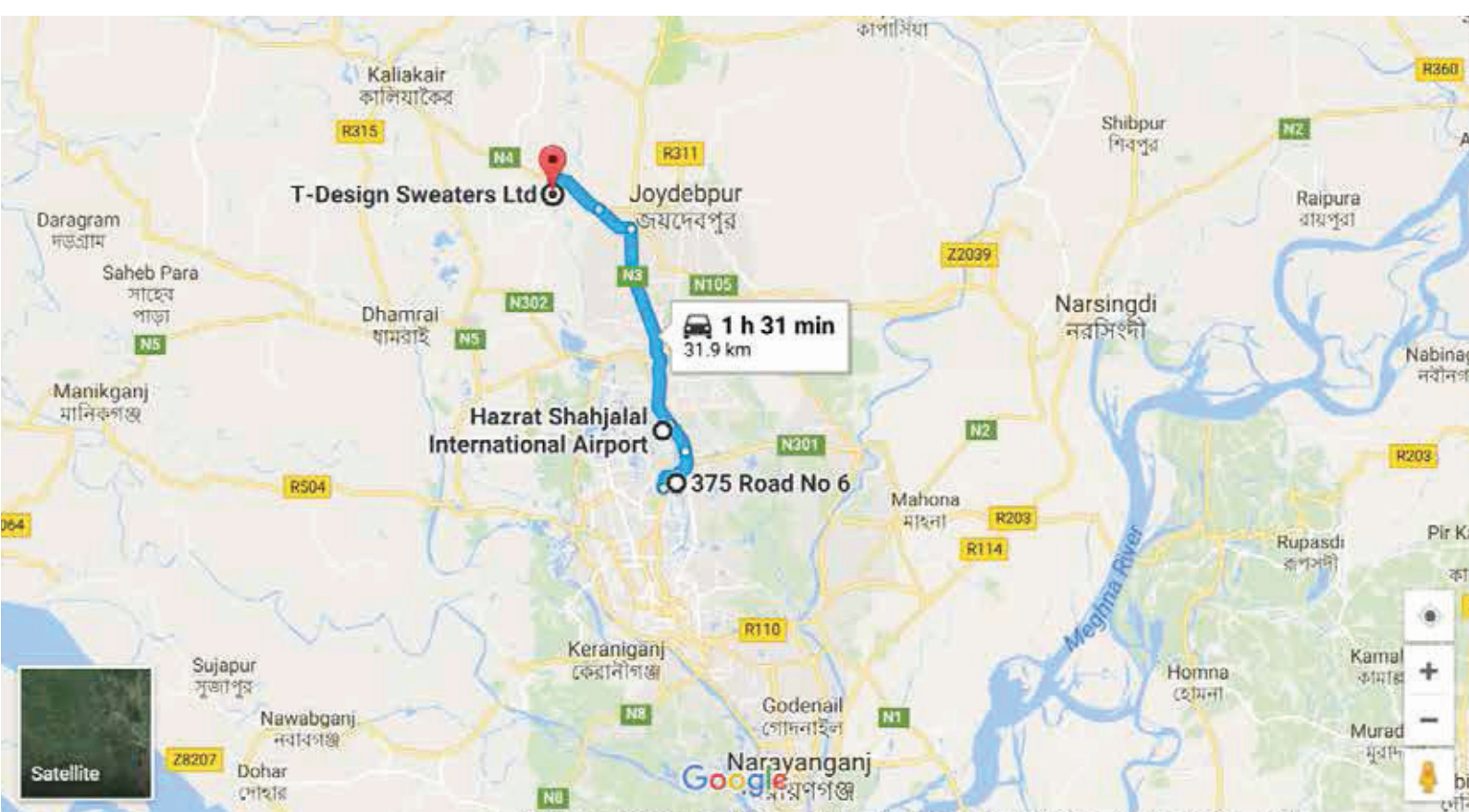
JAMUNA BANK LIMITED  
Mohakhali Branch  
Mohakhali, Dhaka

## Head Office

House No: 375  
Road No: 6 (West), Baridhara D.O.H.S  
Dhaka, Bangladesh.  
Tel: +88-028412739, 8412753

## Factory

Kashempur Road, Jarun  
Konabari, Gazipur.  
Tel: +88-02-9298935, 9298936



## Contacts

Mr. Abdul Halim (Chairman)  
Cell No : +8801711-835414  
[halim@tdesignsweater.com](mailto:halim@tdesignsweater.com)

Mr. K.M. Rafiqul Islam (Managing Director)  
Cell No : +8801711-523665  
[rafiq@designtexbd.com](mailto:rafiq@designtexbd.com)

Mr. Labib Ahmed (Director)  
Cell No : +8801740-808378  
[labib@tdesignsweater.com](mailto:labib@tdesignsweater.com)



T-DESIGN  
SWEATERS  
LIMITED